

AHU Filter Maintenance Management Solution

For

Pharmaceutical Industry



Our End to End Industry Solutions & Services

- **Mobility Solution Offerings**

- Enterprise Asset management – Plant Maintenance, Service Management, Sales and distribution
- Warehouse Management
- Asset Maintenance - Preventive, Corrective, Breakdown, Calibration
- Asset Tracking using GPS technology – Track and Trace, Asset inspect, Asset Inventory
- Mobile Workforce Management
- Approvals (13 approvals packaged in one app)
- Electronic Order Capture
- Electronic Proof of Delivery
- Signature capture
- Electronic Medical Record

- **Services Offerings**

- Syclo custom development, implementation and Support
- Fiori custom development, implementation and Support
- SAP Mobility Platform implementation and support services
- SAP Business One Implementation and Customization Services
- HANA Cloud Development , Integration and Deployment Services
- ECC functional and ABAP technical development consulting
- BI/BO/HCP Analytics Services
- IOT

- **Mobility Hardware Offerings**

- Development Partner and authorized reseller for Zebra, CalAmp. Samsung, Panasonic Mobile devices



50+ Prepackaged SAP Certified Mobile Apps

14 Apps listed on
SAP App Center
www.sapappcenter.com



mRDS- Mobile Rapid Deployment Solution

- Create, modify app
- Dynamic modeling



RESPONSIVE MOBILE APP DEVELOPMENT

- UI5
- Fiori
- Web IDE



cFSM

- Meter Install
- Meter Maintenance
- Periodic Replacements
- Customer Complaints
- Credit and Collection
- Dunning Notices
- Time Sheet



cHCM

- Recruitment
- Performance
- Time Confirmation
- Schedule
- Leave
- Lone
- Choice Pay
- Separation



cHealthcare

- Doctor Console
- Nursing Console
- Registration
- Billing



cMaintenance

- cCalibration
- cCorrective
- cPreventive
- cBreakdown

cAPPROVAL

- PR and PO
- Service Entry
- Cart Approval
- Payment Approval
- Project Approval
- Invoice Approval
- Notification Approval
- Work Order Approval
- Sales Order for Credit
- Leave & Timesheet

Logistics

- cPOM -Production Order Management
- cWarehouse- Warehouse Management
- cEPOD

Retail

- cTrack
- cPOS



Executive Summary

As part of the digitization journey every pharma industry is looking for an IT solution to manage and track the maintenance activities specially the cleaning of AHU filters, tracking the filter expiry and generate management/compliance reports as part of record keeping.

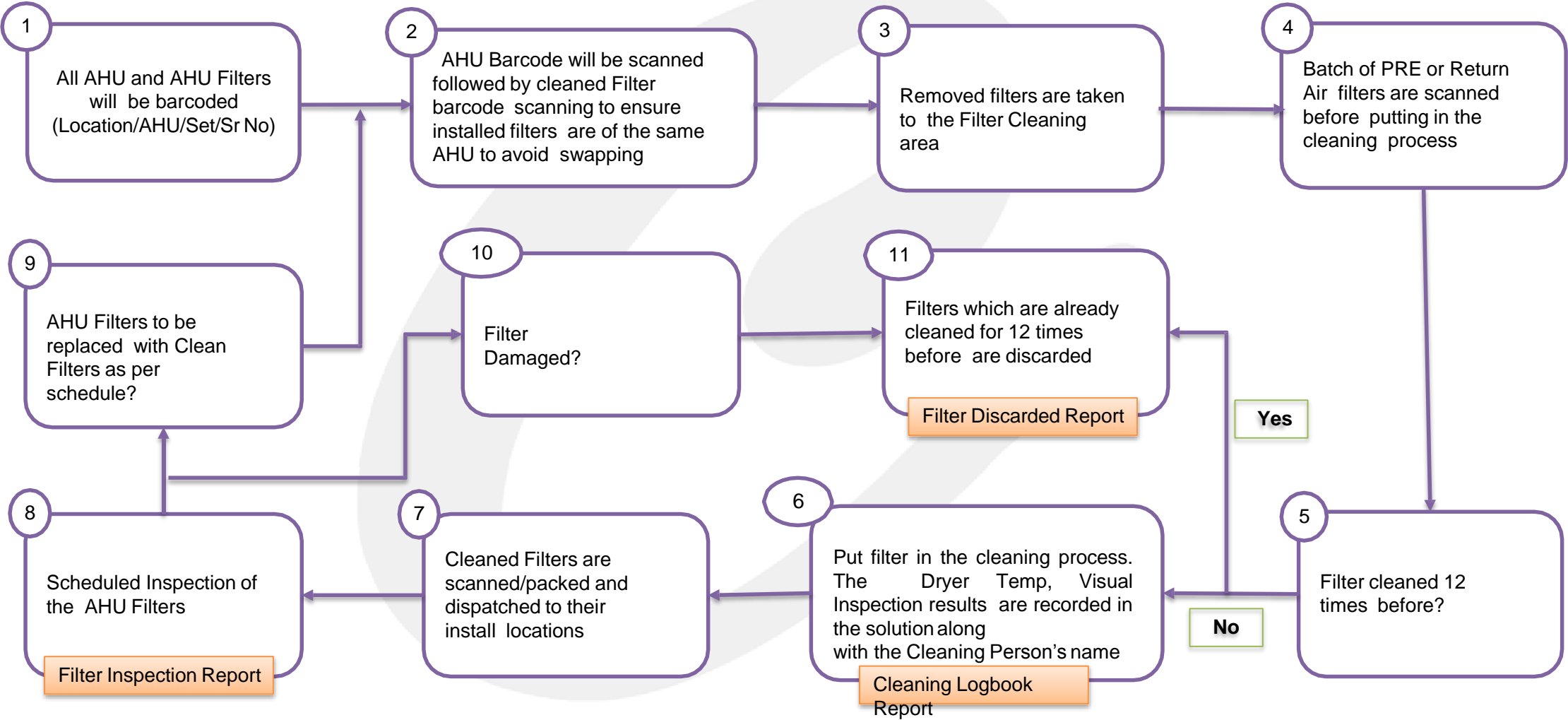
In most of the industries the AHU filter maintenance is a completely manual and paper based process which has it's own challenges towards manual errors, keeping paper records, risk to product manufacturing due to gaps in filter cleaning process etc.

Crave has a unique offering to address these challenges with one integrated solution which can also be integrated with legacy ERP systems. Few of the salient features of the solution are as follows-

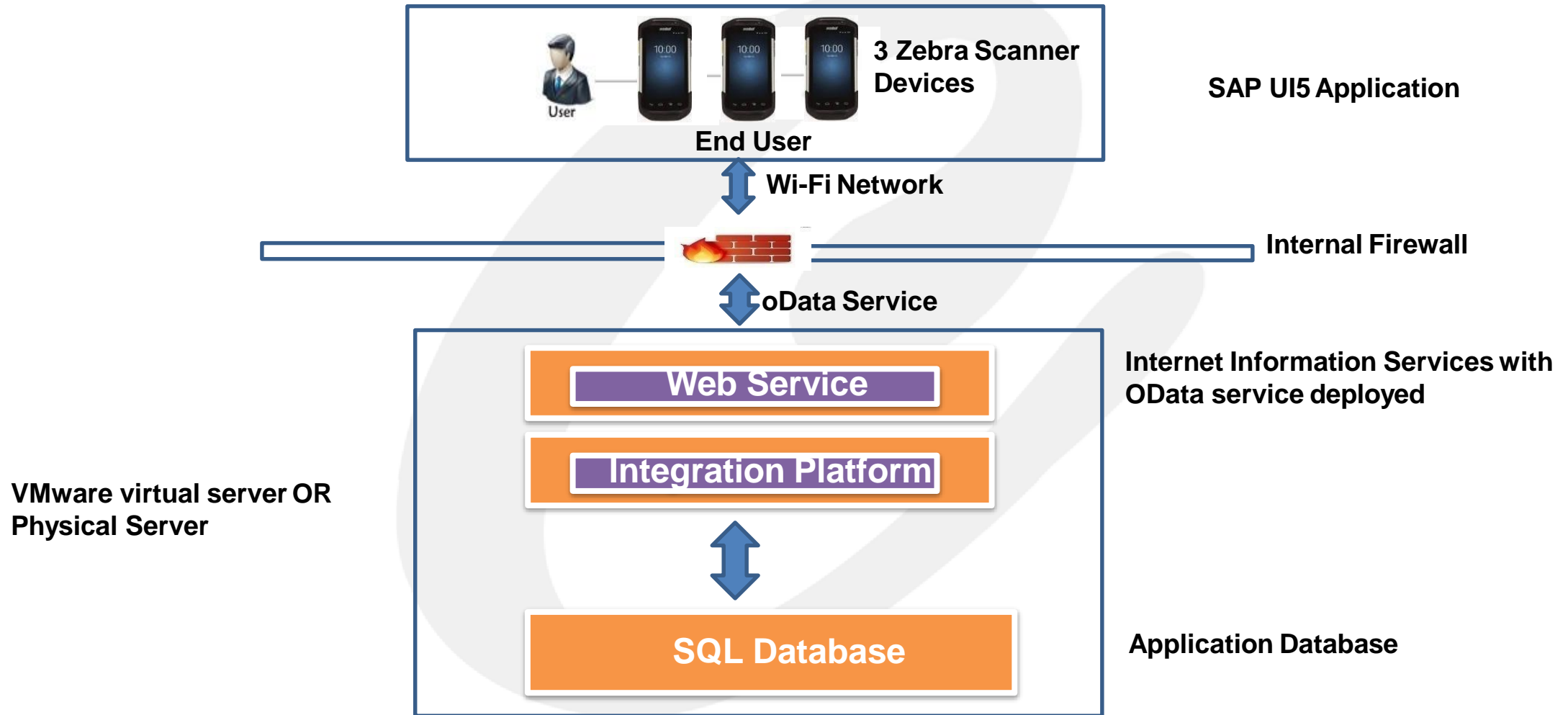
- Barcode Enablement of the AHU filters
- Manage installation and removal of AHU filters with barcode enabled mobile solution
- Solution has it's backend and also can be integrated with existing ERP (PM module)
- Report Generation –
 - Record Sheet for new filter installation
 - Filter Cleaning Logbook
 - Filter monitoring Logbook

Crave InfoTech has implemented similar solution for different pharma industries and the solution is delivering the expected business value.

Indicative - To Be Process

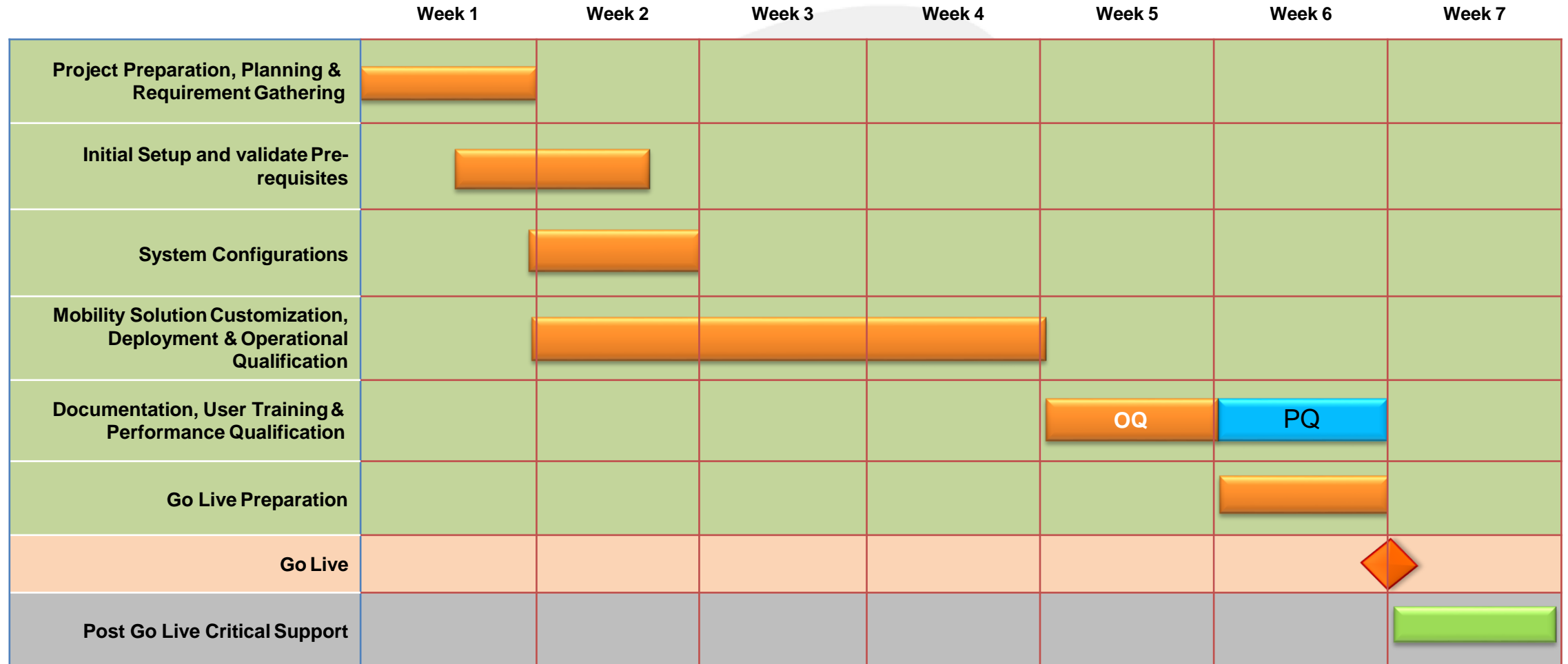


Proposed Solution Architecture



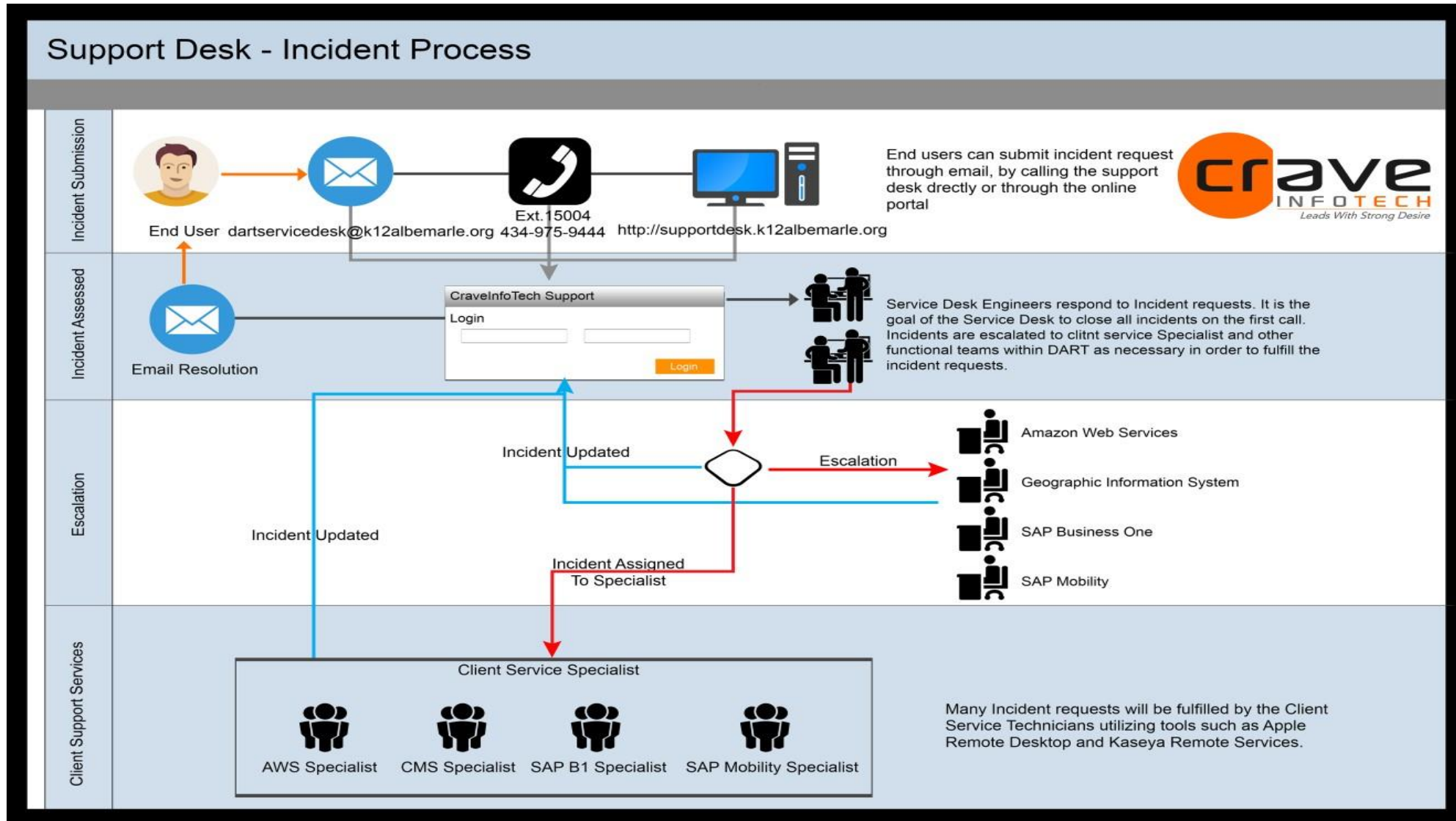
Note: Mobile Scanner and Database/Application server will be in same Wi-Fi network.

Indicative Project Plan



Detailed project plan for each phase will be created as part of Project Planning

Crave Application Support Model



Our Esteemed Clientele



Thank You

- **Sneha Shirsat**
- Sneha.shirsat@craveinfotech.com
- +91 7875446722